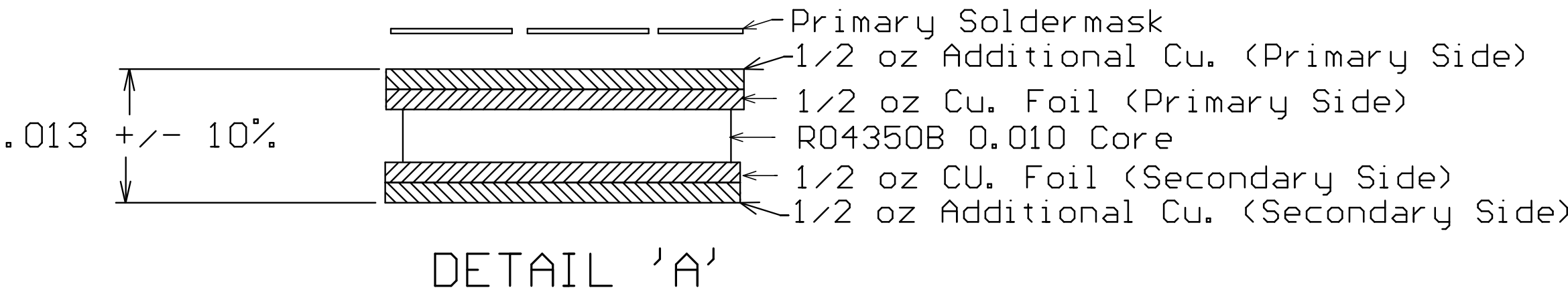


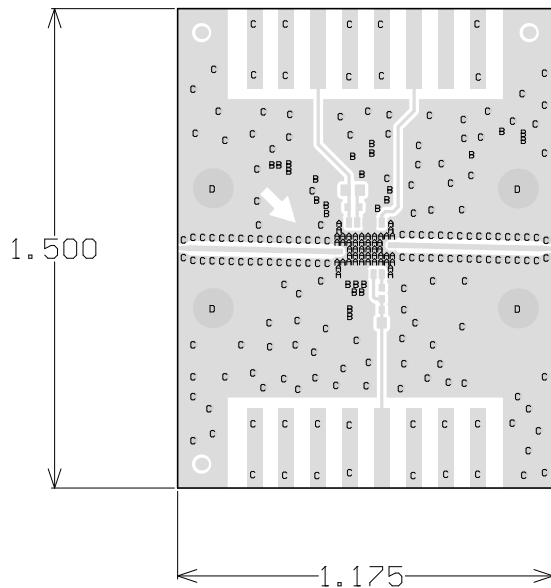
4314

BOARD DIELECTRIC / COPPER STACKUP  
FINISHED BOARD THICKNESS  
(EXCLUDING PRIMARY SOLDERMASK)



C

Symbol	Hit Count	FHS	Tolerance	Plated	Hole Type
A	50	8.00mil	+/-3mil	PTH	Round
B	26	8.10mil	+3mil/-8.1mil	PTH	Round
C	178	12.00mil	+3mil/-12mil	PTH	Round
D	4	78.00mil	+/-3mil	PTH	Round

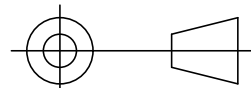


NOTES:

1. MATERIAL:  
R04350B 10 MIL THICKNESS.  
COPPER ON PRIMARY AND SECONDARY SIDE TO BE PLATED UP TO 1 OZ CU.  
MATERIAL STACKUP, THICKNESS, AND STARTING COPPER FOIL PER DETAIL 'A'.
2. FINISH:  
ELECTROLESS NICKEL/ELECTROLESS PALLADIUM/IMMERSION GOLD (ENEPIG) IN ACCORDANCE WITH IPC-4552.  
IMMERSION GOLD: 0.03-0.127 MICRONS  
ELECTROLESS PALLADIUM: 0.1-0.5 MICRONS  
ELECTROLESS NICKEL: 3-6 MICRONS  
FINAL FINISH SHALL PASS SOLDERABILITY TESTING PER JESD22-B102D METHOD 1 AND BE WIRE BONDABLE.  
THERE SHALL BE NO PITS, PIN HOLES OR NODULES WITHIN EXPOSED METAL AREAS.  
STACKUP REPRESENTS FINISH THICKNESS.
3. PCB SHALL BE BUILT PER IPC-6012 CLASS 2 AND CONFORM TO IPC-A-600 CLASS 2 LATEST REVISIONS.
4. ALL HOLES TO BE PLATED THRU UNLESS OTHERWISE SPECIFIED.
5. ELECTRONIC DATA IS EQUAL TO THE FINISHED LINE WIDTH.
6. ALL FINISHED HOLE SIZES APPLY AFTER PLATING.
7. ALL 8.0 MIL FHS SHALL BE FILLED WITH THERMALLY CONDUCTIVE MATERIAL, CAPPED OVER, AND PLANARIZED FLAT.
8. COPPER PLATING IN THROUGH HOLES WILL BE .001" MINIMUM AVERAGE WITH AN ABSOLUTE MINIMUM OF .0007".
9. DIMENSIONS SHOWN ARE FOR LOCATION OF O,0 FOR THE DRILL FILE.
10. LPI SOLDER MASK COATING SHALL CONFORM TO IPC-SM-840, CLASS T.  
NO SOLDERMASK ON SECONDARY SIDE.
11. ALL GROUNDED COPLANAR LINES ARE CONTROLLED IMPEDANCE. A 17.7 MIL LINE WIDTH WITH 13.7 MIL GAP SHALL BE 50 OHMS +/- 8% WITH REFERENCE TO THE GROUND PLANE WITH A DISTANCE OF 10 MIL FROM LAYER 2.
12. SILKSCREEN PRIMARY SIDE ONLY WITH WHITE NON-CONDUCTIVE EPOXY INK.  
NO SILKSCREEN ON EXPOSED COPPER.
13. ALL MATERIALS DESCRIBED IN THIS DOCUMENT/DRAWING SHALL BE IN COMPLIANCE WITH AND CONTAIN NO SUBSTANCES RESTRICTED OR REQUIRING SPECIAL RECLAMATION UNDER THE LATEST RoHS, WEEE OR ELV DIRECTIVES.

A

X	MAAM-011238
NEXT ASSY	USED ON
APPLICATION	

<div>UNLESS OTHERWISE SPECIFIED INTERPRET DRAWING PER ASME Y14.5 DO NOT SCALE THIS DRAWING</div> <div>NOTE: THIS DRW INCORPORATES THIRD ANGLE PROJECTION</div> <div></div> <div>MACOM Technology Solutions CONFIDENTIAL INFORMATION SUBJECT TO NDA</div> <div><p>The information contained in this document or material is the valuable and confidential property of MACOM Technology Solutions Holdings, Inc. and/or its subsidiaries or affiliates collectively MACOM, provided to you subject to a non-disclosure agreement between you and MACOM solely for use in supporting MACOM's business as and to the extent MACOM authorizes in writing from time to time. This information shall be held in strictest confidence and shall not be reproduced, published, disclosed to others, or used for any purpose except as and to the extent specifically authorized by MACOM in a separate written agreement. Permission is granted for reproduction, this legend must be included in any and all copies. This document or material shall be promptly returned to MACOM or destroyed upon request, completion of the use for which it was made available to recipient, or termination of MACOM's relationship with recipient, whichever first occurs.</p></div>	<div>UNLESS OTHERWISE SPECIFIED DIMENSIONS ARE IN INCHES</div>		<div>MACOM</div> <div>WWW.MACOM.COM</div>		
	TOLERANCES ON				
	DECIMALS	ANGLES			
<div>.X ±.1 .XX ±.02 .XXX ±.005 .XXXX ±.0005</div>	±0.5	TITLE FABRICATION, EVB 5mmQFN65P-12LD			
<div>UNLESS OTHERWISE SPECIFIED 63/ ALL OVER</div>		SIZE	DRAWING NO.		REVISION
MATERIAL	SEE NOTE 1	B	PT-0023307		A
FINISH	SEE NOTE 2	SCALE:	1:1	PACKAGE TYPE: 5mmQFN65P-12LD	SHEET 1 OF 1